



AS Art & Design

What you will study

There is a single module at AS:

- Coursework Portfolio

This is a broad based course in Fine Art, Alternative Media. Students have to complete projects in two areas from a list which includes Fine Art (painting and drawing), Graphic Design (printmaking), digital media, ICT and photography. Projects involve researching a 'theme' using a range of media, materials, and techniques used by artists.

There are two modules at A2:

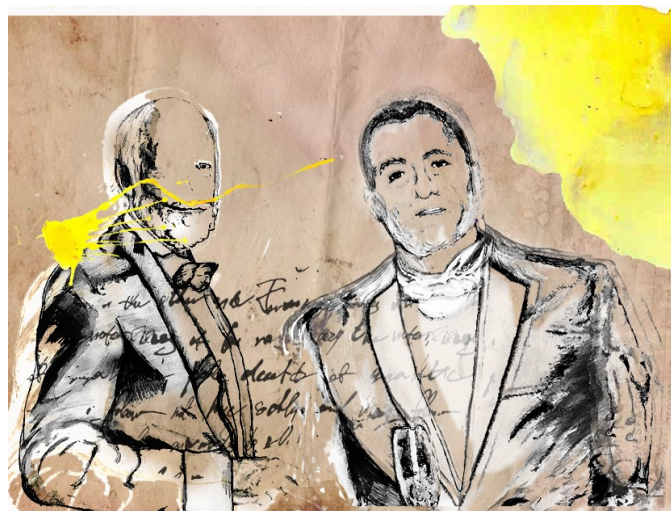
- Personal Investigation
- Externally set assignment

How you will study

5 hours a week of formal teaching, with at least 4 hours a week of personal study for practical and written homework. Each lesson focuses on a new technique, so attendance at lessons is essential. Projects are presented in large A3

sketchbooks and on A1 sheets.

All projects are heavily supported by digital media—photography and film. You will have the opportunity to visit galleries and exhibitions, and participate in Artist in Residence workshops.



How you will be assessed

The examination board is WJEC. Further information on this specification is available on www.wjec.co.uk

Completion of coursework and student progress is monitored through continuous assessment and weekly target setting. The Controlled Assignment is set in February, with a 15 hour examination in April. Both AS and A2 are assessed internally and moderated externally. All units are displayed for assessment in May.

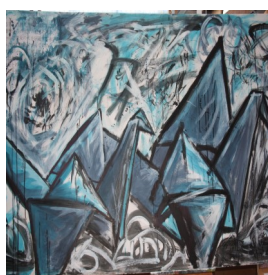
Your options after this course

Students can use the A2 Art & Design qualification together with other A levels to gain entry onto most university courses. There are considerable career opportunities available as a result of having an A level Art & Design qualification.

Further information from Mr S. Sherrington,

Why choose Art & Design?

- Develop your self-motivation, initiative, independent thinking and problem solving skills.
- The course will challenge your creative abilities and sharpen your critical thinking.
- Denbigh High School students have an excellent record in going on to Art and Design based careers.





AS Biology

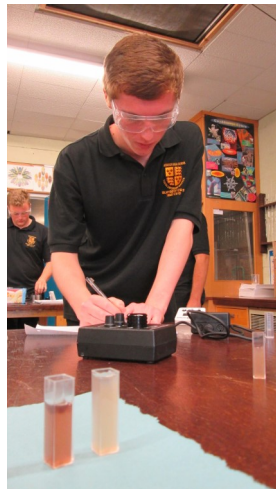
What and how you will study

A Level Biology builds upon the great foundations a student has made at GCSE level Biology, ideally suited to Additional Science students, but also accessible for high achieving Applied Science students (C+ at GCSE or Level 2 Merits and Distinctions).

Topics covered at AS level include:

- cell organisation, including practical microscopy lessons
- an in-depth look at the properties and roles of the fundamental chemicals of life
- the workings of the lungs, heart and digestive system
- the monitoring and maintenance of biodiversity.

The year 13 units cover; respiration, homeostasis, microbiology, biotechnology, genetics, reproduction and much more.



During the fortnightly ten hours of Biology A Level studies there will also be opportunities to hone practical skills via higher level practical tasks and assessed modules based upon investigations derived from the classroom learning experiences.



How you will be assessed

The examination board is WJEC. In both AS and A2 the assessment is comprised of two, externally marked, summer exams per year and these make up 90% of your overall A Level grade. The final 10% comes from the practical element which is assessed in year 13.

You will also be expected to keep organised,



thorough notes on your practical skills and findings in the course lab book. This is gradually completed over the two year period and used as evidence of ability and exposure to the required practical elements of the course.

Your options after this course

Biology has applications to many career and further study choices- it keeps your options open. It is a great choice of subject and can be useful for many areas of work; medicine, dentistry, veterinary science, sport science, physiotherapy, pharmacy, diet and nutrition, optometry, nursing, zoology, marine biology or forensic science.

To find out more about this course, speak to Mr. S. Jones, Head of Science.



Why choose Biology?

- Biology opens your eyes to the natural world around you and instils a sense of awe and amazement in all those that study it.
- Biology is a stepping stone to myriad courses.
- Biology allows you to develop your skills of enquiry as well as your practical skills.
- Biology enables development of high level numeracy & literacy skills.



AS English Language & Literature

What you will study:

Did you enjoy GCSE English Language and Literature? If you want to learn how to write with flair; if you want to understand how language shapes meaning; if you have a keen eye for the detail in texts: - English Language and Literature AS is the course for you!

At AS level you will study the fundamental principles of language study so that you are able to investigate, describe and analyse examples of spoken and written language in use. You will also use the skills and knowledge that you acquire to produce effective original writing.

In addition, you will develop your knowledge of dramatic techniques, your skills as interpreters of performance texts and your analysis of how writers present their viewpoint.

At A2 you will develop a wider knowledge of literary and linguistic terminology through the study of Shakespeare, prose and comparison of unseen texts. You will also have the opportunity to develop your wider reading through study of a chosen genre.

How you will study:

5 hours a week of formal teaching, with at least 4 hours a week of personal study. Your specialist teachers will support you in your classwork and provide guidance for your independent study. You will be expected to participate in group work, presentations and discussion, undertake individual research and read widely to support your studies.

How you will be assessed:

The examination board is WJEC The specification is English Language and Literature Further information on this specification is available at www.wjec.co.uk

AS (2 units)

Unit 1: Comparative Analysis and Creative Writing

2 hour examination (20%)

Unit 2: Drama and Non-Literary Text Study

2 hour examination (20%)

A level (The above plus a further 3 units)

Unit 3: Shakespeare

2 hour examination (20%)

Unit 4: Unseen Texts and Prose Study

2 hour examination (20%)

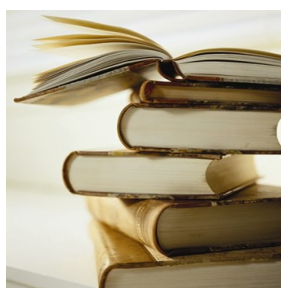
Unit 5: Critical and Creative Genre Study

Non-examination assessment: 2500—3500 words (20%)

Your options after this course

A detailed study of English Language and Literature at A level will provide a suitable foundation for the study of English through a range of higher education courses. The study of English will equip you with many of the skills required for a wide range of careers including journalism, marketing, business, law or teaching and many others. An excellent complement to the study of other languages or literature, an AS or A Level in English Language and Literature provides prospective employers or institutions of further education with evidence of your analytical and writing skills, your ability to work independently and your understanding of the ways in which language shapes meaning.

Further information from Mrs R Williams, Subject Leader in English.



Why choose English Language?

- This course develops articulate, creative and informed students.
- Explore how English language influences the way we speak and behave, and how literature is used to explore this development.
- Learn how to communicate effectively to benefit your future career.
- Excellent gateway subject to a range of higher education courses and careers.



AS Geography

What you will study

The AS course is divided into 2 units:

Unit 1 Changing Landscapes

Section A: Changing Landscapes: Glaciation
Section B: Tectonic Hazards

Unit 2 Changing Places

Section A: Changing Places
Section B: Fieldwork Investigations (1 Physical Geography investigation and 1 Human Geography investigation based on fieldwork)

The A2 course consists of 3 units.

Unit 3 Global Systems & Global Governance

Section A: Global Systems: Water & Carbon Cycles
Section B: Global Governance, Change and Challenges (population migration and global governance of the world's oceans)

Section C: 21st Century Challenges

Unit 4 Contemporary Themes in Geography

Section A: Tectonic Hazards
Section B: Contemporary themes in Geography: Ecosystems/Weather & Climate/ Energy Challenges and Dilemmas)

Unit 5 Individual Investigation

An independent study on a topic of your choice, that is researched and submitted for marking.

How you will study

5 hours a week of formal teaching, supported by personal study. A minimum of 4 field visits.



How you will be assessed

The examination board is WJEC. Further information on this specification is available on www.wjec.co.uk

Unit 1: a 2 hour written examination accounting for 24% of the qualification. 5 compulsory structured questions with data response.

Unit 2: a 1hr 30min written examination accounting for 16% of the qualification. 5 compulsory structured questions with data response.

Unit 3: a 2hr written examination accounting for 24% of the qualification. 4 compulsory structured questions and 2 extended response questions

Unit 4: a 2hr written examination accounting for 16% of the qualification. 1 extended response question and 2 essays

Unit 5: non-examination assessment accounting for 20% of the qualification. Individual investigation of approx 3000 words.

Your options after this course

Geography provides a firm foundation for progression into a wide variety of careers or courses in Higher Education.

Further information from Mrs D. Howlett, Subject Leader of Geography.



Why choose Geography?

- Geography is interesting, varied and deals with topics that are relevant to the world today.
- As a 'facilitating subject', Geography is one of the subjects preferred by Russell Group universities. Studying Geography will help you keep your options open when choosing a degree, as you will demonstrate the breadth of knowledge and skills top universities want.
- The transferable skills developed will help make you more employable!



AS Government & Politics

What you will study

At **AS Level** you will develop a broad knowledge and understanding of the political system in the UK. There are two compulsory units:

Unit One: Government in Wales and the United Kingdom examines the British Constitution, the Judiciary, how parliament and government works, the Welsh Assembly and the impact of devolution.

Unit Two: Living and participating in a democracy examines citizenship in the UK, elections and the electoral process, voting behaviour and the role of pressure groups.

At **A2 Level** you will specialise in the study of political concepts and theories, and in the government of the USA. There are two compulsory



units:

Unit Three: Political concepts and theories examines liberalism, conservatism, socialism, communism and nationalism, and the differences between these political 'isms'.

Unit Four: Government of the USA examines the US Constitution, the role and function of Congress, the President, the Supreme Court, the electoral process and voting behaviour.

How you will study

5 hours a week of formal teaching, with at least 4 hours a week of personal study.

You will be expected to undertake background

reading to build up your knowledge and understanding. You will have to analyse sources, draft your own notes and write essays,



conduct research, participate in discussions, and answer examination-style questions.

How you will be assessed

You will sit two written examinations for AS level and two for the A2 qualification.

The examination board is WJEC. Further information on this specification is available on www.wjec.co.uk.

Your options after this course

The skills you develop in Government & Politics will give you an excellent foundation for many degree courses and employment. It is useful if you want a career in management or the public services.

Further information from Dr. P. Evans, Acting Subject Leader in History.



Why choose Government & Politics?

- Develop your knowledge of how Wales, Britain and the United States are governed.
- Gain an understanding of the differing political ideologies and what they stand for.
- It is an interesting subject which develops your learning skills.
- Understand what is going on in the news.



AS History

What you will study

There are two modules at AS:

- **Europe in the Age of Absolutism and Revolution, 1682-1815.** The main developments of the reigns of Peter the Great of Russia, Frederick the Great of Prussia, France under the rule of Louis XV and Louis XVI, conflict between the Great Powers—Seven Years War, Revolutionary War, Napoleonic War
- **Reform and Protest in Wales and England, 1783-1832.** Radicalism and the fight for parliamentary reform: the impact of the French Revolution, popular protest—Luddism, Spa Fields, Peterloo massacre, Swing riots, 1832 Reform Act



There are two modules at A2:

- **The American Century, 1890-1990.** The struggle for Civil Rights—Jim Crow, Supreme Court activism, role of Martin Luther King, consequences of the Civil Rights movement. The making of a super power — inactive, reactive & proactive
- **Reform and Protest in Wales and England, 1783-1848.** Protest and campaigns for social reform — Chartist movement, Rebecca Riots, development of the Whig and Tory Parties, reform of the Poor Law, Factory and Mine legislation, campaign against child labour

How you will study

5 hours a week of formal teaching, with at least 4 hours a week of personal study. Lessons will

be divided equally between British and European history.

You will be expected to undertake background reading to build up your knowledge and understanding. You will have to analyse sources, draft your own notes and write essays, conduct research, participate in discussions,



and answer examination-style questions.

How you will be assessed

You will sit two written examinations for AS level and for the A2 qualification, together with a unit of internal assessment (coursework).

The examination board is WJEC. Further information on this specification is available on www.wjec.co.uk.

Your options after this course

The skills you develop in History will give you an excellent foundation for many degree courses, for example Law, Accountancy, Psychology, Journalism, Education, Business management, Archaeology, Leisure and Tourism.

Further information from Dr. P. Evans, Acting Subject Leader in History.



Why choose History?

- History is a Humanities subject which combines well with other subject areas.
- It will develop your ability to communicate clearly and to structure concise, logical arguments.
- Assess the significance of historical events and individuals and set them in context.



AS Mathematics

What you will study

There are two units of study at AS (40%):

- Pure Mathematics - Unit 1 (25%)
- Applied Mathematics - Unit 2 (15%)

There are two units of study at A2 (60%):

- Pure Mathematics - Unit 3 (35%)
- Applied Mathematics - Unit 4 (25%)

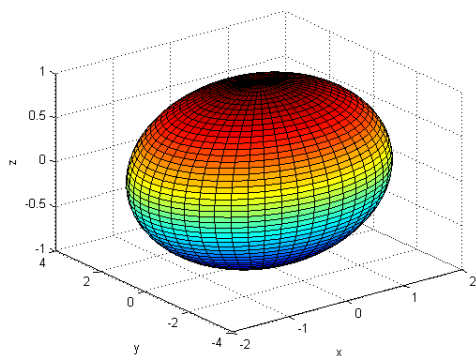
Pure Mathematics involves the study of calculus, algebra, trigonometry and analytical geometry. Knowledge of these topics is essential to the student who wishes to embark on further study with any mathematical content.

Applied Mathematics includes

Statistics which involves the study of probability and statistical techniques. It is useful to support work in biological and social sciences, and for use in business, commerce and manufacturing industry.

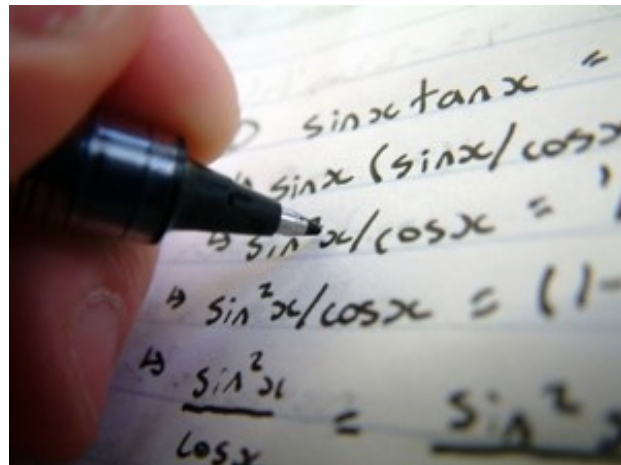
and

Mechanics which involves the study of mathematical modelling and applied calculus. It is useful to support work in Physics and to prepare for Higher Education studies in Engineering, Mathematics and Physics.



How you will study

5 hours a week of formal teaching, with at least 4 hours a week of personal study. Homework and independent study are important features of the course.



How you will be assessed

The examination board is WJEC. Further information on this specification is available on www.wjec.co.uk

Each unit is assessed by an exam, which will take place in June of the first year for AS. A2 units are examined in June of the second year. Papers may be retaken to improve upon grades.

Your options after this course

Mathematics is an excellent preparation for many degree courses and professions. It is very useful for students going on to study Medicine, Engineering and Science Degrees. Some professions such as Accountants and Architects require a strong mathematics background.

Further information from Mrs K Flanagan, Subject Leader in Mathematics.



Why choose Mathematics?

- Enjoy the challenge.
- Helps with other subjects with a high mathematics content.
- Recent analysis has shown that students with an A level in mathematics earn substantially more than those without.



BTEC Level 3 in Performing Arts

What you will study

This is a two-year course which is the equivalent of 1 A level.

You will explore a number of areas of the Performing Arts, including drama and musical theatre. There is a range of options available to you to develop your personal skills in dance and other performance skills.

In Year 12 and 13 you will study six mandatory units:

- Unit 1: Investigating Practitioners' work
- Unit 2: Developing Skills and Techniques for Live Performance
- Unit 3: Group Performance Workshop

You will also complete a further optional units.

How you will study

360 guided learning hours of formal teaching, with personal study, rehearsals or directed activities. Theatre visits and public performances form an integral part of the course, and students are encouraged to immerse themselves fully in out of hours learning experiences associated with either the technical or practical elements of theatre and performing.



How you will be assessed

The examination board is Edexcel. Further information on this BTEC specification is available on www.edexcel.org.uk.

Assessment -

4 units of which 2 are mandatory and 2 are external.

Your final grade will be a single award.

Your options after this course

BTEC Performing Arts is a vocational course



which is intended to give you practical skills in a professional working environment. You will be able to apply for courses at colleges and universities. Denbigh High School students have an excellent record in gaining places at colleges and going on to professional careers.

Further information from Mrs E Williams and/or Mrs C Tranmer, Performing Arts Department.



Why choose BTEC Performing Arts?

- Develop skills in all areas of performance in Performing Arts Studio.
- An excellent way to improve your advanced communication skills, team working and confidence in presentation.
- A strong foundation for a career in performing.



AS Physics

What you will study

AS-Level and A-level Physics allows students to appreciate how fundamental Science works and to study optional topics that particularly interest them including -Sports Physics, Medical Physics and Environmental Physics.

There are five units in the specification – two at AS and three at A2.

Four of the units are assessed by exam with one unit assessing investigative and practical skills.

Practical investigations play a large role in the course and are the main focus that drives the content.

AS Modules

- Motion, Energy and Matter.
- Electricity and Light.

Modules at A2

- Oscillations and Nuclei.
- Fields and One from -
 - Alternating currents
 - Medical physics
 - The physics of sports
 - Energy and the environment
- Investigative and practical skills in A2 Physics.



Yo
A-l
and
the
sol
Me
Co
En
stu
suc
ele

ct
y
s is a
in
and
are
/ ,

Further information from Mr Jon Breese, Science Faculty.

How you will study

5 hours a week of formal teaching, with at least 4 hours a week of personal study.

How you will be assessed

The examination board is the WJEC. The specification, guidance, past papers and mark schemes can all be downloaded free from the WJEC website <http://www.wjec.co.uk>



Why choose Physics?

- Understand natural science at its most fundamental and the part it plays in the functioning of our world and beyond.
- Develop your appreciation of how Science works in practice and its relevance beyond the laboratory.
- You will gain analytical, evaluative and practical skills, including the ability to plan and manipulate information and data.



Product Design

What you will study

There are two modules at AS:

- Written Exam 2 hours 20%
- Design and Make task 20%

Think about the objects that you love. Your mobile phone with its delicious curves was designed on a computer screen. The car you yearn for started life as a reduced size clay model. As a 3D designer you are at the crossroads of a number of skills.

You'll look at materials, production processes and the impact of cost and design. You'll produce some coursework using your own design with a range of materials and media.

You will learn how to assemble data and assess it, how to investigate facts and use deduction, how to put over your point of view, how to work as a team, and how to take responsibility for your own learning.

Experience training on the latest manufacturing equipment. You will use state of the art CNC equipment, including laser cutters, CNC milling/routing and 3D printing.

There are two modules at A2:

- Written Exam 2 Hours 30mins 30%
- Design and Make project 30%

How you will study

4½ hours a week of formal study in the workshops, classrooms and the ICT Studio. You will need to allocate a minimum of four hours of additional personal study in school and at home in order to improve your skills. You need to be prepared to develop your sketching, CAD and making skills to a high level.

How you will be assessed

The examination board is the WJEC. The draft specification, guidance and mark schemes can all be downloaded free from the WJEC website, www.wjec.co.uk.

Your AS work is assessed in a two hour written paper accounts and in a coursework design



Year 12 Audio Project

portfolio.

Your options after this course

3D design could take you into a number of exciting career paths. Of course there's product or automotive design. But what about computer generated cartoons? Or maybe CAD for industry appeals to you more? This course could take you into architecture, teaching, manufacturing, advertising or engineering.

Further information from Mr. G. Jones, Subject Leader in Design & Technology.



Why choose Product Design

- Learn more about the influence of design in the world around us.
- Develop your creative and problem-solving skills to produce a satisfying end product.
- Take part in the EESW project solving real problems for industry.



AS Religious Studies

What you will study

There are two modules at AS:

- An Introduction to Religion and Ethics
- Compulsory module, Christianity

This course is open to any person who has an interest in the things that really matter in this world. An open and inquisitive mind is essential to success as the course will be covering everything from learning about religious figures, sacred texts to religious concepts and practices. The religion and ethics module will include, the study of ethical language and thought, Aquinas' natural law, Fletcher's situation Ethics and Utilitarianism.

All units will enlarge your understanding of religious beliefs and practices and how they affect people's lives. Some units emphasise moral issues; others study a particular religion in depth. You will develop thinking skills. You will also be challenged and helped to learn more about yourself.

How you will be assessed

4½ hours a week of formal teaching, with at least 4 hours a week of personal study. Students of this course have the opportunity to combine a variety of approaches of learning that will not only stimulate them personally but will also help them gain essential skills qualifications with ease.

Learning is done through a variety of different methods, like teaching and discussion. Resources you will use include books, the internet, TV and magazines. You will develop reading and writing skills and may share your learning with other students in classroom presentations and displays.

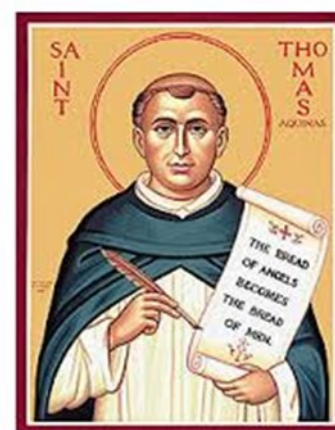
How you will be assessed

The examination board is WJEC. Further information on this specification is available on www.wjec.co.uk.

Your options after this course

Religious Studies is one of the most versatile courses you will study at A level in terms of the skills that it will help you to develop. The skills you develop in RS will give you an excellent foundation for many degree courses, for example Law, Psychology, Journalism, Education and Leisure and Tourism.

Further information from Mrs Kim Woodcock, Subject Leader in Religious Studies.



Why choose RS?

- It is interesting and will help you to develop a wide variety of useful skills.
- RS deals with the big issues that are most important in human life.
- It will help you to understand life better.



BTEC Level 3 in Sport

What you will study

The BTEC Level 3 National Extended Certificate for Sport qualification is aimed at students who want to continue their education through applied learning and who aim to progress to higher education and ultimately to employment in the sport sector. The qualification is worth the equivalent of one GCE A level.

You will study a selection of compulsory units such as:

- Anatomy and Physiology
- Fitness Training and Programming for
- Health, Sport and Well-being Professional Development in the Sports Industry



Students will also undertake optional units such as:

- Sports Coaching
- Practical team sports
- Work Experience in Sport
- Analysis of Sports performance

How you will study

Students will receive 5 hours per week of formal teaching, with students expected to complete at least 5 hours per week of independent learning time.

Apart from the variety of aspects covered in sport it will reinforce independent learning, the ability to research topics using a variety of sources and I.T. skills which are vital in completing assignments.



How you will be assessed

The examination board is Edexcel. Further information on this BTEC specification is available on www.edexcel.org.uk.

There are three main forms of assessment: external, internal and synoptic. Students are expected to achieve a set criteria in order to gain pass, merit or distinction.

Your options after this course

The qualification carries UCAS points and is recognised by higher education providers as contributing to meeting admission requirements for many courses if taken alongside other qualifications as part of a two-year programme of study.

Further information from Mr Eden Fenlon, Subject Leader in Physical Education.



Why choose BTEC Sport?

- It opens up a large variety of options at degree level or allows students to go straight into employment.
- A stimulating mixture of practical, testing and theory in PE and Sport.
- Study of Sport particularly encourages the development of skills and behaviours such as teamwork, leadership, performance analysis, resilience, evaluation, analysis and synthesising concepts.



AS Welsh (2nd Language) CYMRAEG

AIMS OF THE COURSE:

This course aims to develop students spoken and written Welsh. Students will learn how to use the language in a wide variety of situations. They will study a number of modern Welsh texts and study the media in Wales, enabling them to appreciate Wales' rich, cultural heritage. The course aims to develop students' confidence in their use of Welsh and to take their place in a bilingual society at the start of the 21st century.

CONTENT OF THE AS:

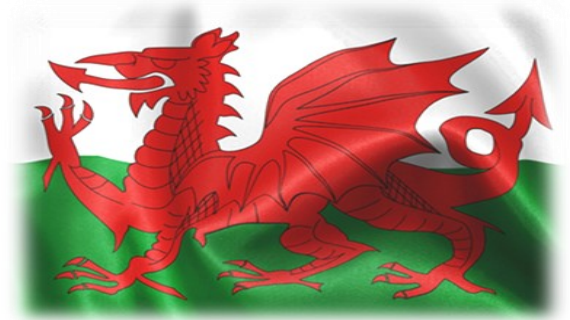
- ◆ Unit 1 -The Film and Oracy – students study the film 'Patagonia' and discuss it in pairs or groups. They will also be questioned individually about their chosen topic for Unit 2.
- ◆ Unit 2 - Written coursework – students have a choice of themes from which to choose.
- ◆ Unit 3 -Language and Poetry – This written examination aims to improve students' written Welsh and they will also study a number of modern Welsh poems.

CONTENT OF THE A2:

- ◆ Unit 4 - The Drama and Oracy – students will study the drama 'Crash' and will be expected to discuss the use of Welsh on social media, in the theatre as well as in films and magazines. Students will also complete a synoptic assessment individually.
- ◆ Unit 5 –The Welsh language in Society and concurrent use of language – Students answer questions about historical events to do with the Welsh language and the challenges which face the language today. They will also be expected to respond in Welsh to an article written in English.
- ◆ Use of Language and The Short Story – the aim is to further develop students' written Welsh and to respond personally to one of four short stories.

ASSESSMENT PROCEDURE:

- AS – UNIT 1 – A twenty minute oral examination groups of three or pairs followed by about five minutes of individual questions. (15% = 60 marks)
 UNIT 2 – Written coursework. (10% = 60 marks)



UNIT 3 – A two hour language and poetry examination.(15% = 120 marks)

- A Level – UNIT 4 – A half hour oral examination in groups of three or pairs followed by about five minutes of individual questions. (25%=75 marks)
 UNIT 5 – A two hour written examination on 'Welsh in Society' and students will respond in Welsh to a passage written in English. (15% = 80 marks)
 UNIT 6 – A two hour examination on use of language and the short story. There will also be a synoptic assessment. (20% = 100marks)

SKILLS/APTITUDES NEEDED TO SUCCEED:

A passion for the Welsh language and a desire to find out more about the heritage and culture of Wales.
 A commitment to avail oneself of all the opportunities to speak and use the Welsh language outside the classroom. We would expect students to have achieved a 'B' in the Higher Tier papers at GCSE level.



Cymraeg

BENEFITS AND USES:

Students who study Welsh will develop their communication skills throughout the two years of study. The benefits of studying Welsh with a view to working in Wales are obvious, particularly in the public sector and in education. Many private sector companies are also realising the benefits of providing a Welsh language service and need employees who can offer these skills. The skills and discipline needed to succeed at AS and A Level will help students as they progress into higher education and the world of work. Welsh 'A' level will also support other subjects if students wish to study outside of Wales and has equal status with all other A Levels. Fluency in two languages can also help with the acquisition of a third and fourth language. Finally, studying Welsh can also bring personal satisfaction when students can answer 'Yes I can.' to the question 'Can you speak Welsh then?'

Level will also support other subjects if students wish to study outside of Wales and has equal status with all other A Levels. Fluency in two languages can also help with the acquisition of a third and fourth language. Finally, studying Welsh can also bring personal satisfaction when students can answer 'Yes I can.' to the question 'Can you speak Welsh then?'